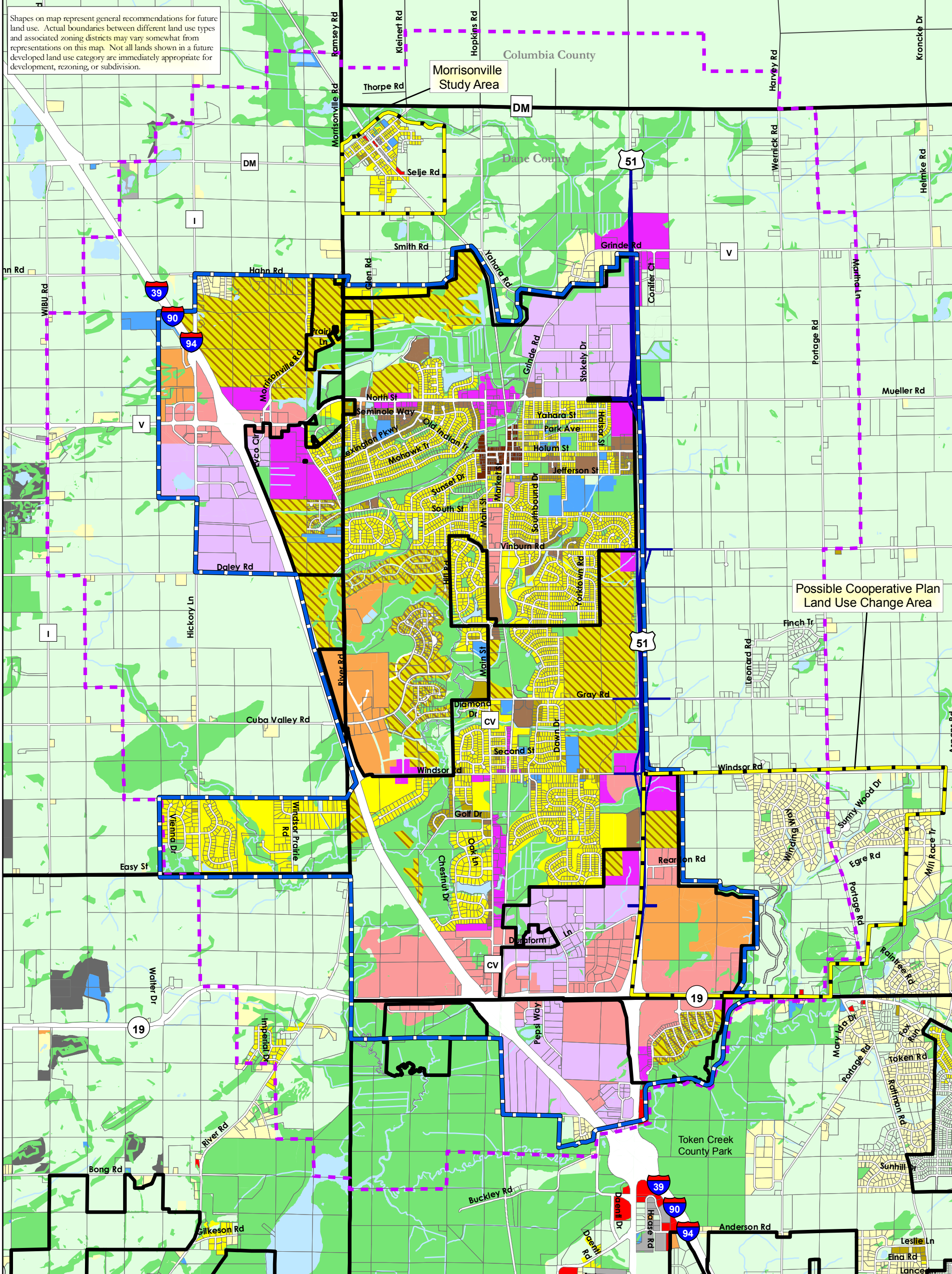


Shapes on map represent general recommendations for future land use. Actual boundaries between different land use types and associated zoning districts may vary somewhat from representations on this map. Not all lands shown in a future developed land use category are immediately appropriate for development, rezoning, or subdivision.



Possible Cooperative Plan Land Use Change Area

Village of DeForest Comprehensive Plan

9

Future Land Use

Adopted: August 7, 2006
 Amended: April 2, 2007
 April 21, 2008
 March 16, 2009
 March 1, 2010



Source: Dane County I/O, Dane County RPC, Vierbicher

- County Boundary
- Municipal Boundary (2009)
- Future Northern Urban Service Area Boundary
- Parcel
- Future Hwy 51 Alignment
- Land Use Study Area
- DeForest Extraterritorial Jurisdiction
- Proposed Amendment Area (With Amendment Shown If Recommended)
- Agricultural Preservation Area
- Single Family Residential - Unsewered
- Single Family Residential - Sewered
- Two-Family/Townhouse Residential
- Mixed Residential
- Planned Commercial
- Downtown
- Office/Research
- Planned Mixed Use
- Planned Industrial/Business Park
- Government & Institutional
- Industrial
- Extraction
- Parks & Public Recreation/Environmental Corridor
- Woodland
- Surface Water

Note: Outside of the Village's Extraterritorial Jurisdiction, Existing Land Use (2005) is Shown, as Opposed to Future Land Use